



**Edge Hill  
University**

Centre for  
Social Responsibility  
(CSR)

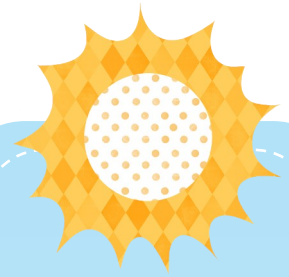
# Collaboration Café

## Flooding: Sharing knowledge and building resilience in local communities

Join us at our forthcoming Collaboration Café hosted by the Department of History, Geography and Social Sciences, and the Centre for Social Responsibility at Edge Hill University. The theme for our June Café is flooding which we will explore from a variety of viewpoints. There already exists a wealth of knowledge about flooding, from practical lay knowledge to technical expertise. We will look at how this might be shared and harnessed to build resilience.

The Café is designed to inspire, facilitate dialogue and generate ideas for research and collaboration. We have some great speakers who will showcase their work in this area to ignite conversations, then it's your opportunity to discuss your ideas and expertise, identify knowledge gaps and connect with like-minded people around this important topic. The format of the session will include a few short presentations followed by table discussions, and will be held on Edge Hill University's beautiful campus in Ormskirk, West Lancashire. Tea and coffee will be provided.

The event formally finishes at 1pm but then there will be an opportunity to view our Emriver 3 river model in action. This enables a look, on compressed timescales, at how river processes alter river channels and their floodplains as well as at the impacts of river channel management. Please feel free to stay and play!



### Details

**Date: Friday 20th  
June 2025**

**Time: 11:00am -  
1:00pm**

**Venue: Geosciences  
GEO 003  
Edge Hill University,  
Ormskirk Campus (L39  
4QP)**

**Book your place  
[here](#)**

**Or scan to book**

